

2025

# Lok Fitting

Perfect Connection, Solid Trust



# Contents

## Lok Fitting

Union Fitting .....	3
Reducing Union .....	3
Bulkhead Union .....	4
Union Elbow .....	4
Male Elbow PT .....	5
Male Elbow NPT .....	6
Female Elbow PT .....	7
Female Elbow NPT .....	8
Union Tee .....	9
Union Cross .....	9
Male Connector PT (Fractional Size) .....	10
Male Connector NPT (Fractional Size) .....	11
Male Connector PT (Metric Size) .....	12
Male Connector NPT (Metric Size) .....	13
Female Connector PT (Fractional Size) .....	14
Female Connector NPT (Fractional Size) .....	15
Male Adapter PT .....	16
Male Adapter NPT .....	17
Female Adapter PT .....	18
Female Adapter NPT .....	18
AN Tube Adapter .....	19
AN Female Adapter .....	19
AN Union .....	19
Cap .....	20
Reducer .....	20
Plug .....	21
Thermocouple Male Connector NPT .....	21
Ferrule Set .....	22
Front Ferrule .....	22
Back Ferrule .....	22
Port Connector .....	23
Fitting Nut .....	23

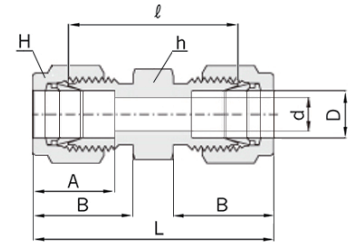
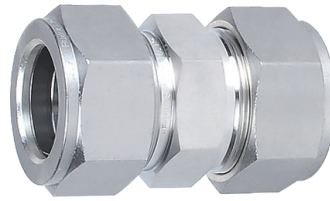
## Lok Valve

LF Coaxial Filter .....	24
Lok Type Check Valve .....	24
Lok Type Ball Valve - HBV10 .....	25
Lok Type Ball Valve - HBV10-NF .....	25
Lok Type Ball Valve - HBV1 .....	26
Lok Type Hex Ball Valve - BV1 .....	26
Lok Type Hex Ball Valve - BV3 .....	27

HIFLUX

# Union Fitting

Connects Fractional Tubes



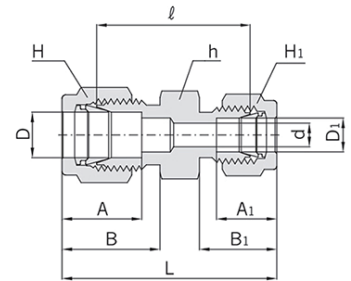
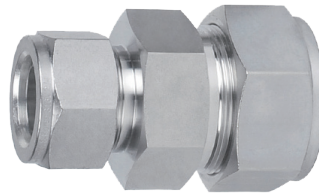
**HiFLUX**

(단위:mm)

Catalog No.	Tube O.D (D)		d Min.	Width Across Flat				A	A1	B	B1
	D			h		H					
	in	mm		in	mm	in	mm				
FL6-1	1/16	1.58	1.27	5/16	7.93	5/16	7.93	8.63	10.92	17.50	25.15
FL6-2	1/8	3.17	2.28	7/16	11.11	7/16	11.11	12.70	15.24	22.35	35.56
FL6-4	1/4	6.35	4.82	1/2	12.70	9/16	14.28	15.24	17.78	26.16	40.89
FL6-6	3/8	9.52	7.11	5/8	15.87	11/16	17.46	16.76	19.30	30.22	44.95
FL6-8	1/2	12.70	10.41	13/16	20.63	7/8	22.22	22.86	21.84	30.98	51.30
FL6-12	3/4	19.05	15.74	1-1/16	26.98	1-1/8	28.57	24.38	21.84	33.27	53.59
FL6-16	1	25.40	22.35	1-3/8	34.92	1-1/2	38.10	31.24	26.41	40.38	64.77

# Reducing Union

Connects Fractional Tubes



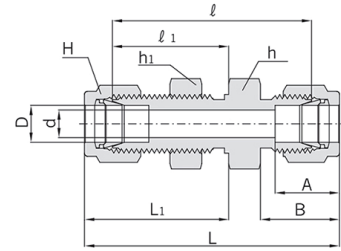
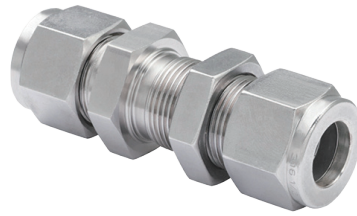
**HiFLUX**

(단위:mm)

Catalog No.	Tube O.D (D)				d Min.	Width Across Flat						A	A1	B	B1	l	L
	D		D1			h		H		H1							
	in	mm	in	mm		in	mm	in	mm	in	mm						
FLRU-0402	1/4"	6.35	1/8"	3.17	2.28	1/2"	12.70	9/16"	14.28	7/16"	11.11	15.24	12.70	17.78	15.24	24.63	38.60
FLRU-0604	3/8"	9.52	1/4"	6.35	4.82	5/8"	15.87	11/16"	17.46	9/16"	14.28	16.76	15.24	19.30	17.78	28.44	43.18
FLRU-0806	1/2"	12.70	3/8"	9.52	7.11	13/16"	20.63	7/8"	22.22	11/16"	17.46	22.86	16.76	21.84	19.30	30.98	48.51
FLRU-1208	3/4"	19.05	1/2"	12.70	10.41	1-1/16"	26.98	1-1/8"	28.57	7/8"	22.22	24.38	22.86	21.84	21.84	33.27	53.59
FLRU-1612	1"	25.40	3/4"	19.05	15.74	1-3/8"	34.92	1-1/2"	38.10	1-1/8"	28.57	31.24	24.38	26.41	21.84	40.38	62.73

# Bulkhead Union

Connects Fractional Tubes



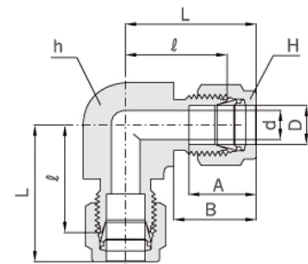
(단위:mm)

# HIFLUX

Catalog No.	Tube O.D (D)		d Min.	Width Across Flat				A	B	ℓ	ℓ1	L	L1	Panel Hole Drill Size	Panel Max Thickness
	in	mm		h, h1		H									
				in	mm	in	mm								
FLBU-03	3/16"	4.76	3.04	9/16"	14.28	1/2"	12.70	13.71	16.00	40.38	25.40	53.59	32.00	9.92	12.70
FLBU-04	1/4"	6.35	4.82	5/8"	15.87	9/16"	14.28	15.24	17.78	42.92	26.16	57.65	33.52	11.50	10.16
FLBU-06	3/8"	9.52	7.11	3/4"	19.05	11/16"	17.46	16.76	19.30	47.49	29.46	62.23	36.83	14.68	11.17
FLBU-08	1/2"	12.70	10.41	15/16"	23.81	7/8"	22.22	22.86	21.84	50.80	31.75	71.12	41.91	19.44	12.70
FLBU-12	3/4"	19.05	15.74	1-3/16"	30.16	1-1/8"	28.57	24.38	21.84	58.67	37.33	78.99	47.49	25.79	16.76
FLBU-16	1"	25.40	22.35	1-5/8"	41.27	1-1/2"	38.10	31.24	26.41	71.37	45.21	95.75	57.40	33.73	19.05

# Union Elbow

Connects Fractional Tubes



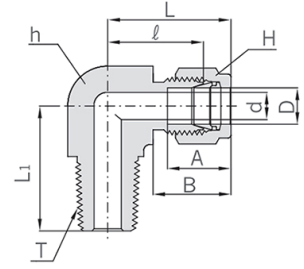
(단위:mm)

# HIFLUX

Catalog No.	Tube O.D (D)		d Min.	Width Across Flat				A	ℓ	L	L1
	in	mm		h		H					
				in	mm	in	mm				
FL9-2	1/8	3.17	2.28	7/16	11.11	7/16	11.11	12.70	15.24	15.74	22.35
FL9-4	1/4	6.35	4.82	1/2	12.70	9/16	14.28	15.24	17.78	19.55	26.92
FL9-6	3/8	9.52	7.11	5/8	15.87	11/16	17.46	16.76	19.30	23.11	30.48
FL9-8	1/2	12.70	10.41	13/16	20.63	7/8	22.22	22.86	21.84	25.90	36.06
FL9-12	3/4	19.05	15.74	1-1/16	26.98	1-1/8	28.57	24.38	21.84	29.71	39.87
FL9-16	1	25.40	22.35	1-3/8	34.92	1-1/2	38.10	31.24	26.41	36.83	49.02

# Male Elbow PT

Connects Fractional Tube To Female PT Thread

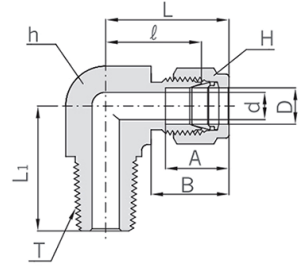


(단위:mm)

Catalog No.	Tube O.D (D)		T* (PT)	d Min.	Width Across Flat				A	B	L	ℓ	L1
	in	mm			h		H						
					in	mm	in	mm					
FLME-0101R	1/16"	1.58	1/16"	1.27	7/16"	11.11	5/16"	7.93	8.63	10.92	15.24	19.05	17.78
FLME-0202R	1/8"	3.17	1/8"	2.28	7/16"	11.11	7/16"	11.11	12.70	15.24	17.02	23.62	17.78
FLME-0204R	1/8"	3.17	1/4"	2.28	1/2"	12.70	7/16"	11.11	12.70	15.24	18.03	24.64	22.80
FLME-0402R	1/4"	6.35	1/8"	4.82	1/2"	12.70	9/16"	14.28	15.24	17.78	19.10	26.47	19.10
FLME-0404R	1/4"	6.35	1/4"	4.82	1/2"	12.70	9/16"	14.28	15.24	17.78	19.81	27.18	23.36
FLME-0406R	1/4"	6.35	3/8"	4.82	11/16"	17.46	9/16"	14.28	15.24	17.78	22.35	29.71	28.40
FLME-0408R	1/4"	6.35	1/2"	4.82	13/16"	20.63	9/16"	14.28	15.24	17.78	24.60	31.97	33.00
FLME-0602R	3/8"	9.52	1/8"	4.82	5/8"	15.87	11/16"	17.46	16.76	19.30	23.11	30.48	20.60
FLME-0604R	3/8"	9.52	1/4"	7.11	5/8"	15.87	11/16"	17.46	16.76	19.30	23.11	30.48	25.40
FLME-0606R	3/8"	9.52	3/8"	7.11	11/16"	17.46	11/16"	17.46	16.76	19.30	23.87	31.24	26.20
FLME-0608R	3/8"	9.52	1/2"	7.11	13/16"	20.63	11/16"	17.46	16.76	19.30	23.80	31.42	33.02
FLME-0804R	1/2"	12.70	1/4"	7.11	13/16"	20.63	7/8"	22.22	22.86	21.84	25.90	36.06	28.30
FLME-0806R	1/2"	12.70	3/8"	9.65	13/16"	20.63	7/8"	22.22	22.86	21.84	25.90	36.06	28.30
FLME-0808R	1/2"	12.70	1/2"	10.41	13/16"	20.63	7/8"	22.22	22.86	21.84	25.90	36.06	33.02
FLME-1208R	3/4"	19.05	1/2"	11.93	1-1/16"	26.98	1-1/18"	28.57	24.38	21.84	29.71	39.87	36.83
FLME-1212R	3/4"	19.05	3/4"	15.74	1-1/16"	26.98	1-1/18"	28.57	24.38	21.84	29.71	39.87	36.83
FLME-1612R	1"	25.40	3/4"	15.74	1-3/8"	34.92	1-1/2"	38.10	31.24	26.41	36.83	49.02	42.20
FLME-1616R	1"	25.40	1"	22.35	1-3/8"	34.92	1-1/2"	38.10	31.24	26.41	36.83	49.02	46.50

# Male Elbow NPT

Connects Fractional Tube To Female PT Thread

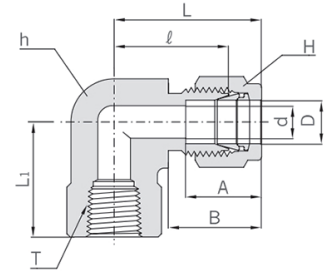
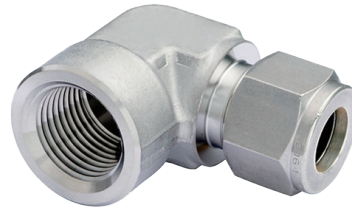


(단위:mm)

Catalog No.	Tube O.D (D)		T* (NPT)	d Min.	Width Across Flat				A	B	L	ℓ	L1
	in	mm			h		H						
					in	mm	in	mm					
FLME-0101N	1/16"	1.58	1/16"	1.27	7/16"	11.11	5/16"	7.93	8.63	10.92	15.24	19.05	17.78
FLME-0202N	1/8"	3.17	1/8"	2.28	7/16"	11.11	7/16"	11.11	12.70	15.24	17.02	23.62	17.78
FLME-0204N	1/8"	3.17	1/4"	2.28	1/2"	12.70	7/16"	11.11	12.70	15.24	18.03	24.64	22.80
FLME-0402N	1/4"	6.35	1/8"	4.82	1/2"	12.70	9/16"	14.28	15.24	17.78	19.10	26.47	19.10
FLME-0404N	1/4"	6.35	1/4"	4.82	1/2"	12.70	9/16"	14.28	15.24	17.78	19.81	27.18	23.36
FLME-0406N	1/4"	6.35	3/8"	4.82	11/16"	17.46	9/16"	14.28	15.24	17.78	22.35	29.71	28.40
FLME-0408N	1/4"	6.35	1/2"	4.82	13/16"	20.63	9/16"	14.28	15.24	17.78	24.60	31.97	33.00
FLME-0602N	3/8"	9.52	1/8"	4.82	5/8"	15.87	11/16"	17.46	16.76	19.30	23.11	30.48	20.60
FLME-0604N	3/8"	9.52	1/4"	7.11	5/8"	15.87	11/16"	17.46	16.76	19.30	23.11	30.48	25.40
FLME-0606N	3/8"	9.52	3/8"	7.11	11/16"	17.46	11/16"	17.46	16.76	19.30	23.87	31.24	26.20
FLME-0608N	3/8"	9.52	1/2"	7.11	13/16"	20.63	11/16"	17.46	16.76	19.30	23.80	31.42	33.02
FLME-0804N	1/2"	12.70	1/4"	7.11	13/16"	20.63	7/8"	22.22	22.86	21.84	25.90	36.06	28.30
FLME-0806N	1/2"	12.70	3/8"	9.65	13/16"	20.63	7/8"	22.22	22.86	21.84	25.90	36.06	28.30
FLME-0808N	1/2"	12.70	1/2"	10.41	13/16"	20.63	7/8"	22.22	22.86	21.84	25.90	36.06	33.02
FLME-1208N	3/4"	19.05	1/2"	11.93	1-1/16"	26.98	1-1/18"	28.57	24.38	21.84	29.71	39.87	36.83
FLME-1212N	3/4"	19.05	3/4"	15.74	1-1/16"	26.98	1-1/18"	28.57	24.38	21.84	29.71	39.87	36.83
FLME-1612N	1"	25.40	3/4"	15.74	1-3/8"	34.92	1-1/2"	38.10	31.24	26.41	36.83	49.02	42.20
FLME-1616N	1"	25.40	1"	22.35	1-3/8"	34.92	1-1/2"	38.10	31.24	26.41	36.83	49.02	46.50

# Female Elbow PT

Connects Fractional Tube To Male PT Thread

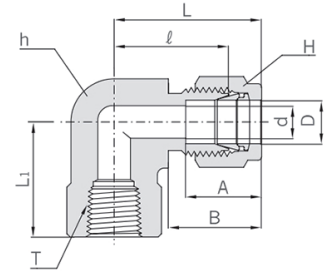
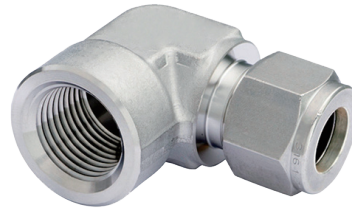


(단위:mm)

Catalog No.	Tube O.D (D)		T* (PT)	d Min.	Width Across Flat				A	B	ℓ	L	L1
	in	mm			h		H						
					in	mm	in	mm					
FLFE-0202R	1/8"	3.17	1/8"	2.28	9/16"	14.28	7/16"	11.11	12.70	15.24	18.03	24.63	19.05
FLFE-0204R	1/8"	3.17	1/4"	2.28	11/16"	17.46	7/16"	11.11	12.70	15.24	20.82	27.43	22.35
FLFE-0402R	1/4"	6.35	1/8"	4.82	9/16"	14.28	9/16"	14.28	15.24	17.78	19.55	26.92	19.05
FLFE-0404R	1/4"	6.35	1/4"	4.82	11/16"	17.46	9/16"	14.28	15.24	17.78	22.35	29.71	22.35
FLFE-0406R	1/4"	6.35	3/8"	4.82	13/16"	20.63	9/16"	14.28	15.24	17.78	24.38	31.75	22.35
FLFE-0602R	3/8"	9.52	1/8"	7.11	5/8"	15.87	11/16"	17.46	16.76	19.30	23.11	30.48	19.05
FLFE-0604R	3/8"	9.52	1/4"	7.11	11/16"	17.46	11/16"	17.46	16.76	19.30	23.87	31.24	22.35
FLFE-0606R	3/8"	9.52	3/8"	7.11	13/16"	20.63	11/16"	17.46	16.76	19.30	25.90	33.27	22.35
FLFE-0804R	1/2"	12.70	1/4"	10.41	13/16"	20.63	7/8"	22.22	22.86	21.84	25.90	36.06	22.35
FLFE-0806R	1/2"	12.70	3/8"	10.41	13/16"	20.63	7/8"	22.22	22.86	21.84	25.90	36.06	22.35
FLFE-0806R	1/2"	12.70	3/8"	10.41	13/16"	20.63	7/8"	22.22	22.86	21.84	25.90	36.06	22.35
FLFE-0808R	1/2"	12.70	1/2"	10.41	1"	25.40	7/8"	22.22	22.86	21.84	28.70	38.86	28.44
FLFE-1208R	3/4"	19.05	1/2"	15.74	1-1/16"	26.98	1-1/8"	28.57	24.38	21.84	29.71	39.87	28.44
FLFE-1212R	3/4"	19.05	3/4"	15.74	1-3/8"	34.92	1-1/8"	28.57	24.38	21.84	34.54	44.70	31.75
FLFE-1612R	1"	25.40	3/4"	22.35	1-3/8"	34.92	1-1/2"	38.10	31.24	26.41	36.83	49.02	31.75

# Female Elbow NPT

Connects Fractional Tube To Male NPT Thread



(단위:mm)

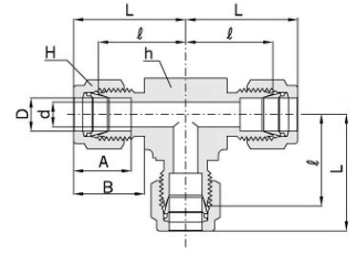
Catalog No.	Tube O.D (D)		T* (NPT)	d Min.	Width Across Flat				A	B	ℓ	L	L1
	in	mm			h		H						
					in	mm	in	mm					
FLFE-0202N	1/8"	3.17	1/8"	2.28	9/16"	14.28	7/16"	11.11	12.70	15.24	18.03	24.63	19.05
FLFE-0204N	1/8"	3.17	1/4"	2.28	11/16"	17.46	7/16"	11.11	12.70	15.24	20.82	27.43	22.35
FLFE-0402N	1/4"	6.35	1/8"	4.82	9/16"	14.28	9/16"	14.28	15.24	17.78	19.55	26.92	19.05
FLFE-0404N	1/4"	6.35	1/4"	4.82	11/16"	17.46	9/16"	14.28	15.24	17.78	22.35	29.71	22.35
FLFE-0406N	1/4"	6.35	3/8"	4.82	13/16"	20.63	9/16"	14.28	15.24	17.78	24.38	31.75	22.35
FLFE-0602N	3/8"	9.52	1/8"	7.11	5/8"	15.87	11/16"	17.46	16.76	19.30	23.11	30.48	19.05
FLFE-0604N	3/8"	9.52	1/4"	7.11	11/16"	17.46	11/16"	17.46	16.76	19.30	23.87	31.24	22.35
FLFE-0606N	3/8"	9.52	3/8"	7.11	13/16"	20.63	11/16"	17.46	16.76	19.30	25.90	33.27	22.35
FLFE-0804N	1/2"	12.70	1/4"	10.41	13/16"	20.63	7/8"	22.22	22.86	21.84	25.90	36.06	22.35
FLFE-0806N	1/2"	12.70	3/8"	10.41	13/16"	20.63	7/8"	22.22	22.86	21.84	25.90	36.06	22.35
FLFE-0806N	1/2"	12.70	3/8"	10.41	13/16"	20.63	7/8"	22.22	22.86	21.84	25.90	36.06	22.35
FLFE-0808N	1/2"	12.70	1/2"	10.41	1"	25.40	7/8"	22.22	22.86	21.84	28.70	38.86	28.44
FLFE-1208N	3/4"	19.05	1/2"	15.74	1-1/16"	26.98	1-1/8"	28.57	24.38	21.84	29.71	39.87	28.44
FLFE-1212N	3/4"	19.05	3/4"	15.74	1-3/8"	34.92	1-1/8"	28.57	24.38	21.84	34.54	44.70	31.75
FLFE-1612N	1"	25.40	3/4"	22.35	1-3/8"	34.92	1-1/2"	38.10	31.24	26.41	36.83	49.02	31.75



# Union Tee

Connects Fractional Tubes

**HiFLUX**



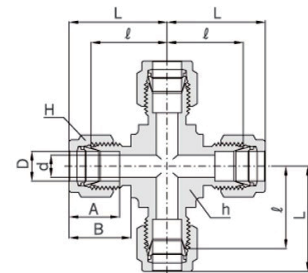
(단위:mm)

Catalog No.	Tube O.D (D)		d Min.	Width Across Flat				A	ℓ	L	L1
	in	mm		h		H					
				in	mm	in	mm				
FL3-1	1/16	1.58	1.27	7/16	11.11	5/16	7.93	8.63	10.92	14.00	17.88
FL3-2	1/8	3.17	2.28	7/16	11.11	7/16	11.11	12.70	15.24	15.74	22.35
FL3-4	1/4	6.35	4.82	1/2	12.70	9/16	14.28	15.24	17.78	19.55	26.92
FL3-6	3/8	9.52	7.11	5/8	15.87	11/16	17.46	16.76	19.30	23.11	30.48
FL3-8	1/2	12.70	10.41	13/16	20.63	7/8	22.22	22.86	21.84	25.90	36.06
FL3-12	3/4	19.05	15.74	1-1/16	26.98	1-1/8	28.57	24.38	21.84	29.71	39.87
FL3-16	1	25.40	22.35	1-3/8	34.92	1-1/2	38.10	31.24	26.41	36.83	49.02

# Union Cross

Connects Fractional Tubes

**HiFLUX**

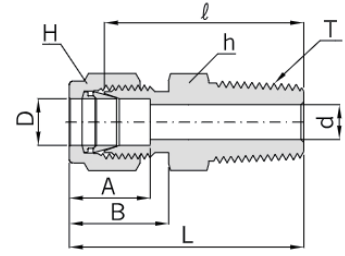
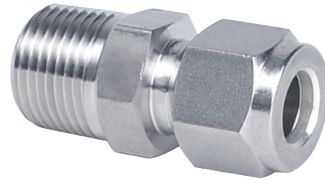


(단위:mm)

Catalog No.	Tube O.D (D)		d Min.	Width Across Flat				A	ℓ	L	L1
	in	mm		h		H					
				in	mm	in	mm				
FL4-2	1/8	3.17	2.28	7/16	11.11	7/16	11.11	12.70	15.24	15.74	22.35
FL4-4	1/4	6.35	4.82	1/2	12.70	9/16	14.28	15.24	17.78	19.55	26.92
FL4-6	3/8	9.52	7.11	5/8	15.87	11/16	17.46	16.76	19.30	23.11	30.48
FL4-8	1/2	12.70	10.41	13/16	20.63	7/8	22.22	22.86	21.84	25.90	36.06
FL4-12	3/4	19.05	15.74	1-1/16	26.98	1-1/8	28.57	24.38	21.84	29.71	39.87
FL4-16	1	25.40	22.35	1-3/8	34.92	1-1/2	38.10	31.24	26.41	36.83	49.02

# Male Connector PT (Fractional Size)

Connects Fractional Tube To Female PT Thread



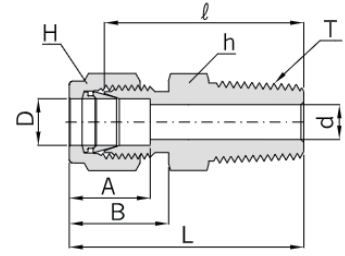
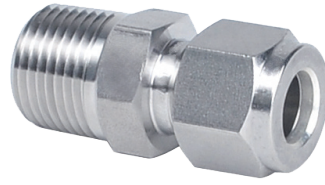
(단위:mm)

# HIFLUX

Catalog No.	Tube O.D (D)		T* PT Size	d+ Min.	Width Across Flat				A	B	l	L
	in	mm			h		H					
					in	mm	in	mm				
FLMC-0202R	1/8	3.17	1/8	2.28	7/16	11.11	7/16	11.11	12.70	15.24	23.87	30.48
FLMC-0204R	1/8	3.17	1/4	2.28	9/16	14.28	7/16	11.11	12.70	15.24	28.95	35.56
FLMC-0206R	1/8	3.17	3/8	2.28	11/16	17.46	7/16	11.11	12.70	15.24	29.21	35.81
FLMC-0208R	1/8	3.17	1/2	2.28	7/8	22.22	7/16	11.11	12.70	15.24	35.56	42.16
FLMC-0402R	1/4	6.35	1/8	4.82	1/2	12.70	9/16	14.28	15.24	17.78	25.40	32.76
FLMC-0404R	1/4	6.35	1/4	4.82	9/16	14.28	9/16	14.28	15.24	17.78	30.48	37.84
FLMC-0406R	1/4	6.35	3/8	4.82	11/16	17.46	9/16	14.28	15.24	17.78	30.98	38.35
FLMC-0408R	1/4	6.35	1/2	4.82	7/8	22.22	9/16	14.28	15.24	17.78	37.33	44.70
FLMC-0412R	1/4	6.35	3/4	4.82	1-1/16	26.98	9/16	14.28	15.24	17.78	38.86	46.22
FLMC-0602R	3/8	9.52	1/8	4.82	5/8	15.87	11/16	17.46	16.76	19.30	27.94	35.30
FLMC-0604R	3/8	9.52	1/4	7.11	5/8	15.87	11/16	17.46	16.76	19.30	32.51	39.87
FLMC-0606R	3/8	9.52	3/8	7.11	11/16	17.46	11/16	17.46	16.76	19.30	32.51	39.87
FLMC-0608R	3/8	9.52	1/2	7.11	7/8	22.22	11/16	17.46	16.76	19.30	38.86	46.22
FLMC-0612R	3/8	9.52	3/4	7.11	1-1/16	26.98	11/16	17.46	16.76	19.30	40.38	47.75
FLMC-0802R	1/2	12.70	1/8	4.82	13/16	20.63	7/8	22.22	22.86	21.84	28.70	38.86
FLMC-0804R	1/2	12.70	1/4	7.11	13/16	20.63	7/8	22.22	22.86	21.84	33.27	43.43
FLMC-0806R	1/2	12.70	3/8	9.65	13/16	20.63	7/8	22.22	22.86	21.84	33.27	43.43
FLMC-0808R	1/2	12.70	1/2	10.41	7/8	22.22	7/8	22.22	22.86	21.84	38.86	49.02
FLMC-0812R	1/2	12.70	3/4	10.41	1-1/16	26.98	7/8	22.22	22.86	21.84	40.38	50.54
FLMC-0816R	1/2	12.70	1	10.41	1-3/8	34.92	7/8	22.22	22.86	21.84	46.99	57.15
FLMC-1208R	3/4	19.05	1/2	11.93	1-1/16	26.98	1-1/8	28.57	24.38	21.84	40.38	50.54
FLMC-1212R	3/4	19.05	3/4	15.74	1-1/16	26.98	1-1/8	28.57	24.38	21.84	40.38	50.54
FLMC-1216R	3/4	19.05	1	15.74	1-3/8	34.92	1-1/8	28.57	24.38	21.84	46.99	57.15
FLMC-1608R	1	25.40	1/2	11.93	1-3/8	34.92	1-1/2	38.10	31.24	26.41	45.21	57.40
FLMC-1612R	1	25.40	3/4	15.74	1-3/8	34.92	1-1/2	38.10	31.24	26.41	45.21	57.40
FLMC-1616R	1	25.40	1	22.35	1-3/8	34.92	1-1/2	38.10	31.24	26.41	50.03	62.23

# Male Connector NPT (Fractional Size)

Connects Fractional Tube To Female NPT Thread



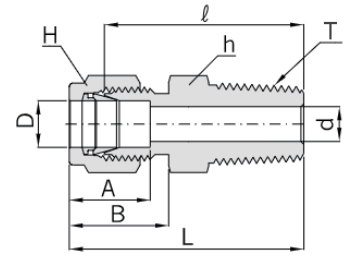
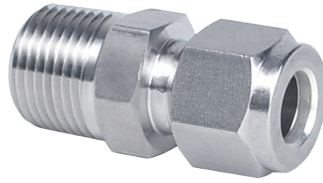
(단위:mm)

# HIFLUX

Catalog No.	Tube O.D (D)		T* PT Size	d+ Min.	Width Across Flat				A	B	l	L
	in	mm			h		H					
					in	mm	in	mm				
FLMC-0202N	1/8	3.17	1/8	2.28	7/16	11.11	7/16	11.11	12.70	15.24	23.87	30.48
FLMC-0204N	1/8	3.17	1/4	2.28	9/16	14.28	7/16	11.11	12.70	15.24	28.95	35.56
FLMC-0206N	1/8	3.17	3/8	2.28	11/16	17.46	7/16	11.11	12.70	15.24	29.21	35.81
FLMC-0208N	1/8	3.17	1/2	2.28	7/8	22.22	7/16	11.11	12.70	15.24	35.56	42.16
FLMC-0402N	1/4	6.35	1/8	4.82	1/2	12.70	9/16	14.28	15.24	17.78	25.40	32.76
FLMC-0404N	1/4	6.35	1/4	4.82	9/16	14.28	9/16	14.28	15.24	17.78	30.48	37.84
FLMC-0406N	1/4	6.35	3/8	4.82	11/16	17.46	9/16	14.28	15.24	17.78	30.98	38.35
FLMC-0408N	1/4	6.35	1/2	4.82	7/8	22.22	9/16	14.28	15.24	17.78	37.33	44.70
FLMC-0412N	1/4	6.35	3/4	4.82	1-1/16	26.98	9/16	14.28	15.24	17.78	38.86	46.22
FLMC-0602N	3/8	9.52	1/8	4.82	5/8	15.87	11/16	17.46	16.76	19.30	27.94	35.30
FLMC-0604N	3/8	9.52	1/4	7.11	5/8	15.87	11/16	17.46	16.76	19.30	32.51	39.87
FLMC-0606N	3/8	9.52	3/8	7.11	11/16	17.46	11/16	17.46	16.76	19.30	32.51	39.87
FLMC-0608N	3/8	9.52	1/2	7.11	7/8	22.22	11/16	17.46	16.76	19.30	38.86	46.22
FLMC-0612N	3/8	9.52	3/4	7.11	1-1/16	26.98	11/16	17.46	16.76	19.30	40.38	47.75
FLMC-0802N	1/2	12.70	1/8	4.82	13/16	20.63	7/8	22.22	22.86	21.84	28.70	38.86
FLMC-0804N	1/2	12.70	1/4	7.11	13/16	20.63	7/8	22.22	22.86	21.84	33.27	43.43
FLMC-0806N	1/2	12.70	3/8	9.65	13/16	20.63	7/8	22.22	22.86	21.84	33.27	43.43
FLMC-0808N	1/2	12.70	1/2	10.41	7/8	22.22	7/8	22.22	22.86	21.84	38.86	49.02
FLMC-0812N	1/2	12.70	3/4	10.41	1-1/16	26.98	7/8	22.22	22.86	21.84	40.38	50.54
FLMC-0816N	1/2	12.70	1	10.41	1-3/8	34.92	7/8	22.22	22.86	21.84	46.99	57.15
FLMC-1208N	3/4	19.05	1/2	11.93	1-1/16	26.98	1-1/8	28.57	24.38	21.84	40.38	50.54
FLMC-1212N	3/4	19.05	3/4	15.74	1-1/16	26.98	1-1/8	28.57	24.38	21.84	40.38	50.54
FLMC-1216N	3/4	19.05	1	15.74	1-3/8	34.92	1-1/8	28.57	24.38	21.84	46.99	57.15
FLMC-1608N	1	25.40	1/2	11.93	1-3/8	34.92	1-1/2	38.10	31.24	26.41	45.21	57.40
FLMC-1612N	1	25.40	3/4	15.74	1-3/8	34.92	1-1/2	38.10	31.24	26.41	45.21	57.40
FLMC-1616N	1	25.40	1	22.35	1-3/8	34.92	1-1/2	38.10	31.24	26.41	50.03	62.23

# Male Connector PT (Metric Size)

Connects Metric Tube To Female PT Thread



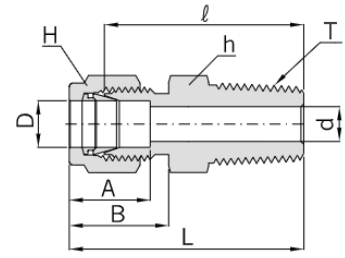
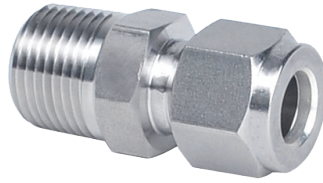
(단위:mm)

# HIFLUX

Catalog No.	Tube O.D (D)	T* PT Size	d+ Min.	Width Across Flat		A	B	l	L
				h	H				
FLMC-M0202R	2	1/8	1.7	12	12	12.9	15.3	23.9	30.5
FLMC-M0402R	4	1/8	2.4	12	12	13.7	16.1	24.6	31.2
FLMC-M0404R	4	1/4	2.4	14	12	13.7	16.1	29.7	36.3
FLMC-M0602R	6	1/8	4.8	14	14	15.3	17.7	25.4	32.8
FLMC-M0604R	6	1/4	4.8	14	14	15.3	17.7	30.5	37.9
FLMC-M0606R	6	3/8	4.8	17	14	15.3	17.7	31.0	38.4
FLMC-M0608R	6	1/2	4.8	22	14	15.3	17.7	37.3	44.7
FLMC-M0802R	8	1/8	4.8	14	16	16.2	18.6	26.7	34.2
FLMC-M0804R	8	1/4	6.3	14	16	16.2	18.6	31.2	38.7
FLMC-M0806R	8	3/8	6.3	17	16	16.2	18.6	31.8	39.2
FLMC-M0808R	8	1/2	6.3	22	16	16.2	18.6	38.1	45.6
FLMC-M1002R	10	1/8	4.8	17	19	17.2	19.5	28.7	36.3
FLMC-M1004R	10	1/4	7.1	17	19	17.2	19.5	33.3	40.9
FLMC-M1006R	10	3/8	7.9	17	19	17.2	19.5	33.3	40.9
FLMC-M1008R	10	1/2	7.9	22	19	17.2	19.5	38.9	46.5
FLMC-M1204R	12	1/4	7.1	22	22	22.8	22.0	33.3	43.4
FLMC-M1206R	12	3/8	9.5	22	22	22.8	22.0	33.3	43.4
FLMC-M1208R	12	1/2	9.5	22	22	22.8	22.0	38.9	49.0
FLMC-M1212R	12	3/4	9.5	27	22	22.8	22.0	40.4	50.5

# Male Connector NPT (Metric Size)

Connects Metric Tube To Female NPT Thread



(단위:mm)

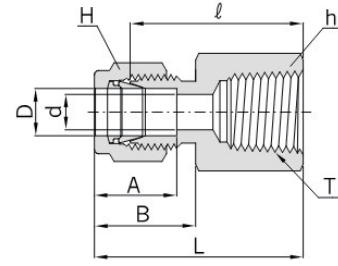
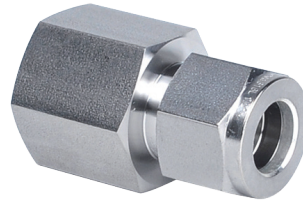
# HIFLUX

Catalog No.	Tube O.D. (D)	T* NPT Size	d+ Min.	Width Across Flat		A	B	l	L
				h	H				
FLMC-M0202N	2	1/8	1.7	12	12	12.9	15.3	23.9	30.5
FLMC-M0402N	4	1/8	2.4	12	12	13.7	16.1	24.6	31.2
FLMC-M0404N	4	1/4	2.4	14	12	13.7	16.1	29.7	36.3
FLMC-M0602N	6	1/8	4.8	14	14	15.3	17.7	25.4	32.8
FLMC-M0604N	6	1/4	4.8	14	14	15.3	17.7	30.5	37.9
FLMC-M0606N	6	3/8	4.8	17	14	15.3	17.7	31	38.4
FLMC-M0608N	6	1/2	4.8	22	14	15.3	17.7	37.3	44.7
FLMC-M0802N	8	1/8	4.8	14	16	16.2	18.6	26.7	34.2
FLMC-M0804N	8	1/4	6.3	14	16	16.2	18.6	31.2	38.7
FLMC-M0806N	8	3/8	6.3	17	16	16.2	18.6	31.8	39.2
FLMC-M0808N	8	1/2	6.3	22	16	16.2	18.6	38.1	45.6
FLMC-M1002N	10	1/8	4.8	17	19	17.2	19.5	28.7	36.3
FLMC-M1004N	10	1/4	7.1	17	19	17.2	19.5	33.3	40.9
FLMC-M1006N	10	3/8	7.9	17	19	17.2	19.5	33.3	40.9
FLMC-M1008N	10	1/2	7.9	22	19	17.2	19.5	38.9	46.5
FLMC-M1204N	12	1/4	7.1	22	22	22.8	22	33.3	43.4
FLMC-M1206N	12	3/8	9.5	22	22	22.8	22	33.3	43.4
FLMC-M1208N	12	1/2	9.5	22	22	22.8	22	38.9	49
FLMC-M1212N	12	3/4	9.5	27	22	22.8	22	40.4	50.5

# Female Connector PT (Fractional Size)

Connects Metric Tube To Female PT Thread

**HiFLUX**



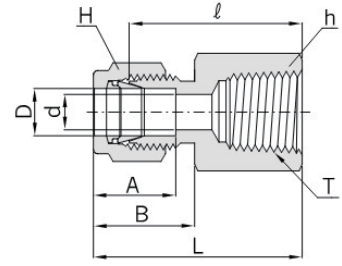
(단위:mm)

Catalog No.	Tube O.D. (D)		T* PT Size	d+ Min.	Width Across Flat				A	B	ℓ	L
	in	mm			h		H					
					in	mm	in	mm				
FLFC-0202R	1/8	3.17	1/8	2.28	9/16	14.28	7/16	11.11	12.70	15.24	22.09	28.70
FLFC-0204R	1/8	3.17	1/4	2.28	3/4	19.05	7/16	11.11	12.70	15.24	26.92	33.52
FLFC-0402R	1/4	6.35	1/8	4.82	9/16	14.28	9/16	14.28	15.24	17.78	23.87	31.24
FLFC-0404R	1/4	6.35	1/4	4.82	3/4	19.05	9/16	14.28	15.24	17.78	28.44	35.81
FLFC-0406R	1/4	6.35	3/8	4.82	7/8	22.22	9/16	14.28	15.24	17.78	30.22	37.59
FLFC-0408R	1/4	6.35	1/2	4.82	1-1/16	26.98	9/16	14.28	15.24	17.78	35.05	42.41
FLFC-0602R	3/8	9.52	1/8	7.11	5/8	15.87	11/16	17.46	16.76	19.30	25.40	32.76
FLFC-0604R	3/8	9.52	1/4	7.11	3/4	19.05	11/16	17.46	16.76	19.30	30.22	37.59
FLFC-0606R	3/8	9.52	3/8	7.11	7/8	22.22	11/16	17.46	16.76	19.30	31.75	39.11
FLFC-0608R	3/8	9.52	1/2	7.11	1-1/16	26.98	11/16	17.46	16.76	19.30	36.57	43.94
FLFC-0612R	3/8	9.52	3/4	7.11	1-5/16	33.33	11/16	17.46	16.76	19.30	40.38	47.75
FLFC-0804R	1/2	12.70	1/4	10.41	13/16	20.63	7/8	22.22	22.86	21.84	30.22	40.38
FLFC-0806R	1/2	12.70	3/8	10.41	7/8	22.22	7/8	22.22	22.86	21.84	31.75	41.91
FLFC-0808R	1/2	12.70	1/2	10.41	1-1/16	26.98	7/8	22.22	22.86	21.84	36.57	46.73
FLFC-0812R	1/2	12.70	3/4	10.41	1-5/16	33.33	7/8	22.22	22.86	21.84	38.10	48.26
FLFC-1208R	3/4	19.05	1/2	15.74	1-1/16	26.98	1-1/8	28.57	24.38	21.84	36.57	46.73
FLFC-1212R	3/4	19.05	3/4	15.74	1-5/16	33.33	1-1/8	28.57	24.38	21.84	38.10	48.26
FLFC-1612R	1	25.40	3/4	22.35	1-3/8	34.92	1-1/2	38.10	31.24	26.41	41.14	53.34
FLFC-1616R	1	25.40	1	22.35	1-5/8	41.27	1-1/2	38.10	31.24	26.41	50.03	62.23

# Female Connector NPT (Fractional Size)

Connects Metric Tube To Female NPT Thread

**HiFLUX**

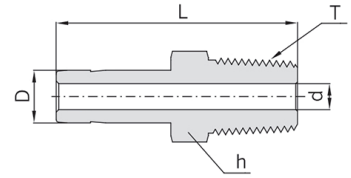


(단위:mm)

Catalog No.	Tube O.D. (D)		T* NPT Size	d+ Min.	Width Across Flat				A	B	ℓ	L
	in	mm			h		H					
					in	mm	in	mm				
FLFC-0202N	1/8	3.17	1/8	2.28	9/16	14.28	7/16	11.11	12.70	15.24	22.09	28.70
FLFC-0204N	1/8	3.17	1/4	2.28	3/4	19.05	7/16	11.11	12.70	15.24	26.92	33.52
FLFC-0402N	1/4	6.35	1/8	4.82	9/16	14.28	9/16	14.28	15.24	17.78	23.87	31.24
FLFC-0404N	1/4	6.35	1/4	4.82	3/4	19.05	9/16	14.28	15.24	17.78	28.44	35.81
FLFC-0406N	1/4	6.35	3/8	4.82	7/8	22.22	9/16	14.28	15.24	17.78	30.22	37.59
FLFC-0408N	1/4	6.35	1/2	4.82	1-1/16	26.98	9/16	14.28	15.24	17.78	35.05	42.41
FLFC-0602N	3/8	9.52	1/8	7.11	5/8	15.87	11/16	17.46	16.76	19.30	25.40	32.76
FLFC-0604N	3/8	9.52	1/4	7.11	3/4	19.05	11/16	17.46	16.76	19.30	30.22	37.59
FLFC-0606N	3/8	9.52	3/8	7.11	7/8	22.22	11/16	17.46	16.76	19.30	31.75	39.11
FLFC-0608N	3/8	9.52	1/2	7.11	1-1/16	26.98	11/16	17.46	16.76	19.30	36.57	43.94
FLFC-0612N	3/8	9.52	3/4	7.11	1-5/16	33.33	11/16	17.46	16.76	19.30	40.38	47.75
FLFC-0804N	1/2	12.70	1/4	10.41	13/16	20.63	7/8	22.22	22.86	21.84	30.22	40.38
FLFC-0806N	1/2	12.70	3/8	10.41	7/8	22.22	7/8	22.22	22.86	21.84	31.75	41.91
FLFC-0808N	1/2	12.70	1/2	10.41	1-1/16	26.98	7/8	22.22	22.86	21.84	36.57	46.73
FLFC-0812N	1/2	12.70	3/4	10.41	1-5/16	33.33	7/8	22.22	22.86	21.84	38.10	48.26
FLFC-1208N	3/4	19.05	1/2	15.74	1-1/16	26.98	1-1/8	28.57	24.38	21.84	36.57	46.73
FLFC-1212N	3/4	19.05	3/4	15.74	1-5/16	33.33	1-1/8	28.57	24.38	21.84	38.10	48.26
FLFC-1612N	1	25.40	3/4	22.35	1-3/8	34.92	1-1/2	38.10	31.24	26.41	41.14	53.34
FLFC-1616N	1	25.40	1	22.35	1-5/8	41.27	1-1/2	38.10	31.24	26.41	50.03	62.23

# Male Adapter PT

Connects Fractional Port To Male PT Thread



# HIFLUX

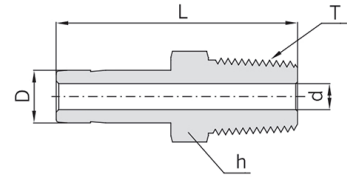
(단위:mm)

Catalog No.	Tube O.D (D)		T* (PT)	d (mm)	Width Across Flat (h)		L
	in.	mm			in.	mm	
FLMA-02T02R	1/8"	3.17	1/8"	2.03	7/16"	11.11	29.5
FLMA-02T04R	1/8"	3.17	1/4"	2.03	9/16"	14.28	34.8
FLMA-04T02R	1/4"	6.35	1/8"	4.32	7/16"	11.11	31.8
FLMA-04T04R	1/4"	6.35	1/4"	4.32	9/16"	14.28	37.08
FLMA-04T06R	1/4"	6.35	3/8"	4.32	11/16"	17.46	37.84
FLMA-06T02R	3/8"	9.52	1/8"	4.83	7/16"	11.11	33.5
FLMA-06T04R	3/8"	9.52	1/4"	6.86	9/16"	14.28	38.9
FLMA-06T06R	3/8"	9.52	3/8"	6.86	11/16"	17.46	39.6
FLMA-06T08R	3/8"	9.52	1/2"	6.86	7/8"	22.22	45.2
FLMA-08T04R	1/2"	12.7	1/4"	7.11	9/16"	14.28	44.5
FLMA-08T06R	1/2"	12.7	3/8"	9.4	11/16"	17.46	45.2
FLMA-08T08R	1/2"	12.7	1/2"	9.4	7/8"	22.22	50.8
FLMA-12T08R	3/4"	19.05	1/2"	11.94	7/8"	22.22	52.3
FLMA-12T12R	3/4"	19.05	3/4"	14.73	1-1/16"	26.98	52.3
FLMA-16T16R	1"	25.4	1"	20.32	1-3/8"	34.92	66



# Male Adapter NPT

Connects Fractional Port To Male NPT Thread



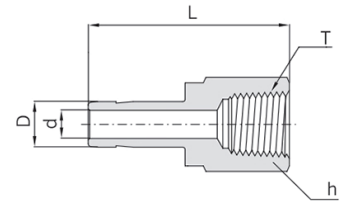
# HIFLUX

(단위:mm)

Catalog No.	Tube O.D (D)		T* (PT)	d (mm)	Width Across Flat (h)		L
	in.	mm			in.	mm	
FLMA-02T02N	1/8"	3.17	1/8"	2.03	7/16"	11.11	29.5
FLMA-02T04N	1/8"	3.17	1/4"	2.03	9/16"	14.28	34.8
FLMA-04T02N	1/4"	6.35	1/8"	4.32	7/16"	11.11	31.8
FLMA-04T04N	1/4"	6.35	1/4"	4.32	9/16"	14.28	37.08
FLMA-04T06N	1/4"	6.35	3/8"	4.32	11/16"	17.46	37.84
FLMA-06T02N	3/8"	9.52	1/8"	4.83	7/16"	11.11	33.5
FLMA-06T04N	3/8"	9.52	1/4"	6.86	9/16"	14.28	38.9
FLMA-06T06N	3/8"	9.52	3/8"	6.86	11/16"	17.46	39.6
FLMA-06T08N	3/8"	9.52	1/2"	6.86	7/8"	22.22	45.2
FLMA-08T04N	1/2"	12.7	1/4"	7.11	9/16"	14.28	44.5
FLMA-08T06N	1/2"	12.7	3/8"	9.4	11/16"	17.46	45.2
FLMA-08T08N	1/2"	12.7	1/2"	9.4	7/8"	22.22	50.8
FLMA-12T08N	3/4"	19.05	1/2"	11.94	7/8"	22.22	52.3
FLMA-12T12N	3/4"	19.05	3/4"	14.73	1-1/16"	26.98	52.3
FLMA-16T16N	1"	25.4	1"	20.32	1-3/8"	34.92	66

# Female Adapter PT

Connects Fractional Port To Male PT Thread

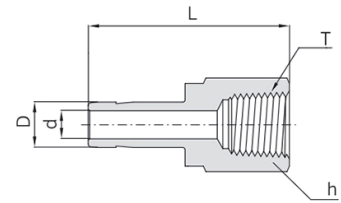


(단위:mm)

Catalog No.	Tube O.D (D)		T* (PT)	d (mm)	Width Across Flat h		L
	in.	mm			in.	mm	
FLFA-02T02R	1/8"	3.17	1/8"	2.03	9/16"	14.28	31.50
FLFA-04T04R	1/4"	6.35	1/4"	4.32	3/4"	19.05	37.10
FLFA-06T06R	3/8"	9.52	3/8"	6.86	7/8"	22.22	40.38
FLFA-08T08R	1/2"	12.70	1/2"	9.40	1-1/16"	26.98	51.80
FLFA-12T12R	3/4"	19.05	3/4"	14.73	1-5/16"	33.33	54.86
FLFA-16T16R	1"	25.40	1"	20.32	1-5/8"	41.27	64.26

# Female Adapter NPT

Connects Fractional Port To Male NPT Thread

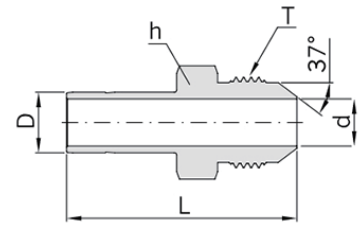
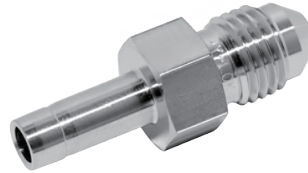


(단위:mm)

Catalog No.	Tube O.D (D)		T* (PT)	d (mm)	Width Across Flat h		L
	in	mm			in	mm	
FLFA-02T02N	1/8"	3.17	1/8"	2.03	9/16"	14.28	31.50
FLFA-04T04N	1/4"	6.35	1/4"	4.32	3/4"	19.05	37.10
FLFA-06T06N	3/8"	9.52	3/8"	6.86	7/8"	22.22	40.38
FLFA-08T08N	1/2"	12.70	1/2"	9.40	1-1/16"	26.98	51.80
FLFA-12T12N	3/4"	19.05	3/4"	14.73	1-5/16"	33.33	54.86
FLFA-16T16N	1"	25.40	1"	20.32	1-5/8"	41.27	64.26

# AN Tube Adapter

Connects Fractional Port To AN Flared Tube



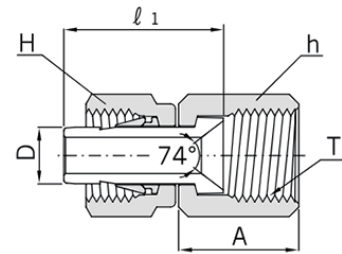
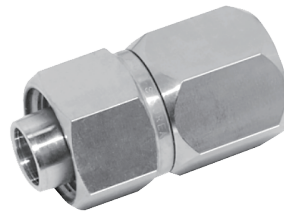
**HiFLUX**

(단위:mm)

Catalog No.	Tube O.D (D)		AN Tube O.D. (D)		Straight Thread T(U)	d min.	Width Across Flat h		L
	in.	mm	in.	mm			in	mm	
FLATA-0404	1/4"	6.35	1/4"	6.35	7/16-20"	4.32	1/2"	12.70	37.08
FLATA-0606	3/8"	9.52	3/8"	9.52	9/16-18"	6.86	5/8"	15.87	39.62
FLATA-0808	1/2"	12.70	1/2"	12.70	3/4-16"	9.40	13/16"	20.63	48.51

# AN Female Adapter

Connects Fractional Port To Male AN

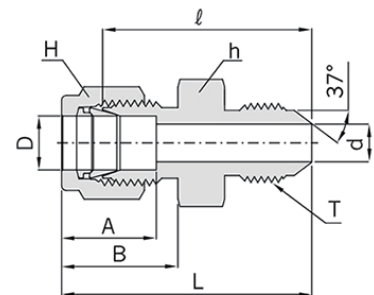


(단위:mm)

Catalog No.	Tube O.D (D)		AN Tube O.D. (D)		Straight Thread T(U)	d min.	Width Across Flat (in.)				A	ℓ1
	in	mm	in	mm			h		H			
							in	mm	in	mm		
FLAFA-0204	1/8"	3.17	1/4"	6.35	7/16-20	9/16"	14.28	7/16"	11.11	15.74	19.05	37.08
FLAFA-0404	1/4"	6.35	1/4"	6.35	7/16-20	9/16"	14.28	9/16"	14.28	15.74	21.33	39.62
FLAFA-0606	3/8"	9.52	3/8"	9.52	9/16-18	11/16"	17.46	11/16"	17.46	18.28	24.89	48.51
FLAFA-0808	1/2"	12.70	1/2"	12.70	3/4-16	7/8"	22.22	7/8"	22.22	21.59	33.00	39.62

# AN Union

Connects Fractional Tubes



(단위:mm)

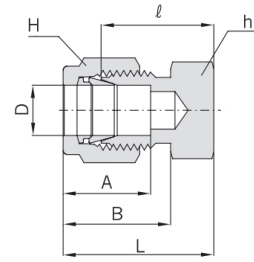
Catalog No.	Tube O.D (D)		*AN Tube Flare Size		Straight Thread T(U)	d Min.	Width Across Flat				A	B	L	L
	in	mm	in	mm			h		H					
							in	mm	in	mm				
FLAU-0204	1/8"	3.17	1/4"	6.35	7/16-20	2.28	1/2"	12.70	7/16"	11.11	12.70	15.24	28.44	35.05
FLAU-0404	1/4"	6.35	1/4"	6.35	7/16-20	4.31	1/2"	12.70	9/16"	14.28	15.24	17.78	30.22	37.59
FLAU-0604	3/8"	9.52	1/4"	6.35	7/16-20	4.31	5/8"	15.87	11/16"	17.46	16.76	19.30	32.25	39.62
FLAU-0606	3/8"	9.52	3/8"	9.52	9/16-18	7.11	5/8"	15.87	11/16"	17.46	16.76	19.30	32.25	39.62
FLAU-0808	1/2"	12.70	1/2"	12.70	3/4-16	9.90	13/16"	20.63	7/8"	22.22	22.86	21.84	35.81	45.97
FLAU-1212	3/4"	19.05	3/4"	19.05	1-1/16-12	15.49	1-1/8"	28.57	1-1/8"	28.57	24.38	21.84	43.18	53.34
FLAU-1616	1"	25.40	1"	25.40	1-5/16-12	21.33	1-3/8"	34.92	1-1/2"	38.10	31.24	26.41	49.27	61.46

**HiFLUX**

# Cap

Connects Fractional Tube End

**HiFLUX**



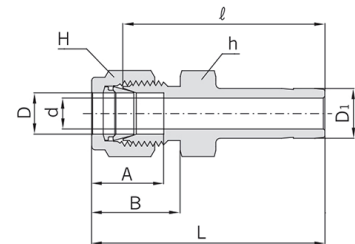
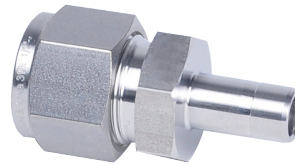
(단위:mm)

Catalog No.	Tube O.D (D)		Width Across Flat				A	B	ℓ	L
			h		H					
	in.	mm	in.	mm	in.	mm				
FLC-02	1/8"	3.17	7/16"	11.11	7/16"	11.11	12.70	15.24	13.46	20.06
FLC-04	1/4"	6.35	1/2"	12.70	9/16"	14.28	15.24	17.78	16.00	23.26
FLC-06	3/8"	9.52	5/8"	15.87	11/16"	17.46	16.76	19.30	18.28	25.65
FLC-08	1/2"	12.70	13/16"	20.63	7/8"	22.22	22.86	21.84	19.05	29.21
FLC-12	3/4"	19.05	1-1/16"	26.98	1-1/8"	28.57	24.38	21.84	21.33	31.49
FLC-16	1"	25.40	1-3/8"	34.92	1-1/2"	38.10	31.24	26.41	26.16	38.35

# Reducer

Connects Fractional Tube To Fractional Port

**HiFLUX**



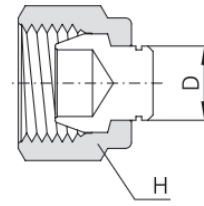
(단위:mm)

Catalog No.	Tube O.D.				d Min	Width Across Flat				A	B	ℓ	L
	h		H			h		H					
	in	mm	in	mm		in	mm	in	mm				
FLR-0204T	1/8"	3.17	1/4"	6.35	2.28	7/16"	11.11	7/16"	11.11	12.70	15.24	29.46	36.06
FLR-0402T	1/4"	6.35	1/8"	3.17	2.03	1/2"	12.70	9/16"	14.28	15.24	17.78	29.46	36.83
FLR-0406T	1/4"	6.35	3/8"	9.52	4.82	1/2"	12.70	9/16"	14.28	15.24	17.78	33.27	40.64
FLR-0604T	3/8"	9.52	1/4"	6.32	4.32	5/8"	15.87	11/16"	17.46	16.76	19.30	34.03	41.40
FLR-0608T	3/8"	9.52	1/2"	12.70	7.11	5/8"	15.87	11/16"	17.46	16.76	19.30	41.14	48.51
FLR-0804T	1/2"	12.70	1/4"	6.35	4.32	13/16"	20.63	7/8"	22.22	22.86	21.84	34.79	44.95
FLR-0806T	1/2"	12.70	3/8"	9.52	6.86	13/16"	20.63	7/8"	22.22	22.86	21.84	36.57	46.73

# Plug

Connects Fractional Port

**HIFLUX**



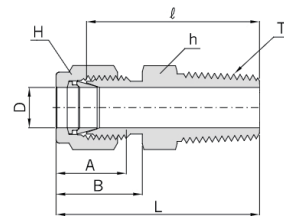
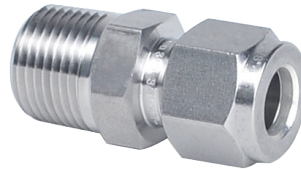
(단위:mm)

Catalog No.	Tube O.D (D)		Width across flat H	
	in	mm	in	mm
FLP-02	1/8"	3.17	7/16"	11.11
FLP-04	1/4"	6.35	9/16"	14.28
FLP-06	3/8"	9.52	11/16"	17.46
FLP-08	1/2"	12.70	7/8"	22.22
FLP-12	3/4"	19.05	1-1/8"	28.57
FLP-16	1"	25.40	1-1/2"	38.10

# Thermocouple Male Connector NPT

Connects Fractional Tube To Female NPT Thread

**HIFLUX**

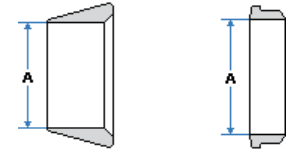


(단위:mm)

Catalog No.	Tube O.D.		T* (NPT) size	Width Across Flat		A	B	l	L
	in	mm		h	H				
FLTMC-0206N	1/8"	3.17	3/8"	11/16"	7/16"	12.70	15.24	29.21	35.81
FLTMC-0406N	1/4"	6.35	3/8"	11/16"	9/16"	15.24	17.78	30.98	38.35
FLTMC-0408N	1/4"	6.35	1/2"	7/8"	9/16"	15.24	17.78	37.33	44.70

# Ferrule Set

Ferrule Set



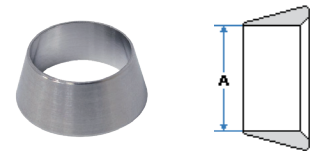
**HiFLUX**

(단위:mm)

Catalog No.	Tube O.D. (D)	
	h	H
FLFS-1	1/16"	1.58
FLFS-2	1/8"	3.17
FLFS-4	1/4"	6.35
FLFS-6	3/8"	9.52
FLFS-8	1/2"	12.7
FLFS-12	3/4"	19.05
FLFS-16	1"	25.4

# Front Ferrule

Ferrule Set



**HiFLUX**

(단위:mm)

Catalog No.	Tube Size	A
FL01-1	1/16"	1.58
FL01-2	1/8"	3.17
FL01-4	1/4"	6.35
FL01-6	3/8"	9.52
FL01-8	1/2"	12.7
FL01-12	3/4"	19.05
FL01-16	1"	25.4

# Back Ferrule

Ferrule Set



**HiFLUX**

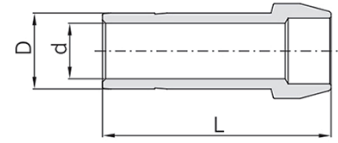
(단위:mm)

Catalog No.	Tube Size	A
FL02-1	1/16"	1.58
FL02-2	1/8"	3.17
FL02-4	1/4"	6.35
FL02-6	3/8"	9.52
FL02-8	1/2"	12.7
FL02-12	3/4"	19.05
FL02-16	1"	25.4

# Port Connector

Connects Two Fractional Hn-Lok Ports

**HiFLUX**



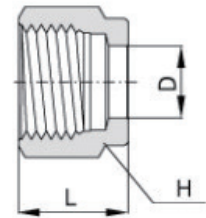
(단위:mm)

Catalog No.	Tube O.D. (D)		d Min	L
	in	mm		
FLPC-0202T	1/8"	3.17	2.03	22.35
FLPC-0404T	1/4"	6.35	4.32	24.89
FLPC-0606T	3/8"	9.52	6.86	26.67
FLPC-0808T	1/2"	12.7	9.4	36.32
FLPC-1212T	3/4"	19.05	14.73	37.85
FLPC-1616T	1"	25.4	20.32	49.28
FL03-16	1	25.4	38.10	20.57

# Fitting Nut

Connects Fractional Tube To Female PT Thread

**HiFLUX**



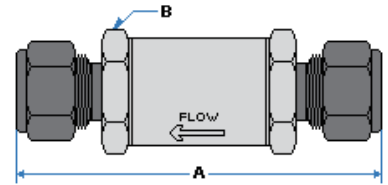
(단위:mm)

Catalog No.	Tube O.D. (D)		Width Across Flat (H)		L
	h	H	h	H	
FL03-1	1/16	1.58	5/16	7.94	7.90
FL03-2	1/8	3.17	7/16	11.11	11.93
FL03-4	1/4	6.35	9/16	14.28	12.70
FL03-6	3/8	9.52	11/16	17.46	14.22
FL03-8	1/2	12.70	7/8	22.22	17.52
FL03-12	3/4	19.05	1-1/8	28.57	17.52
FL03-16	1	25.4	1-1/2	38.10	20.57

# LF Coaxial Filter

Replaceable Filter element

**HiFLUX**



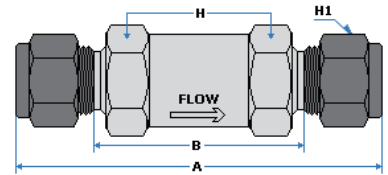
(단위:mm)

Catalog No.	Tube Size	Sintered Filtering Element in2 (mm2)	Dimensions	
			A	B
FL-LF-2	1/8"	0.55 (350)	57,5	14
FL-LF-4	1/4"	1.3 (830)	70	19
FL-LF-6	3/8"	1.3 (830)	81,5	26
FL-LF-8	1/2"	2 (1280)	88,5	26

# Lok Type Check Valve

CV Series

**HiFLUX**



(단위:mm)

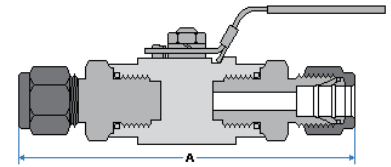
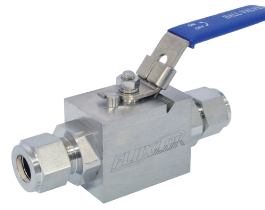
Catalog No.	Orifice	Cv	End Connection		Dimensions mm (in)			
			Inlet	Outlet	A	B	H(Hex)	H1(Hex)
FL-CV1-2	4.8 (0.19)	0.16	1/8" Lok		54.3 (2.14)	28.4 (1.12)	15.87 (5/8)	11.11 (7/16)
FL-CV1-4		0.47	1/4" Lok		59.7 (2.35)	29.5 (1.16)	15.87 (5/8)	14.28 (9/16)
FL-CV2-6	7.1 (0.28)	1.48	3/8" Lok		80.5 (3.17)	47.2 (1.86)	22.22 (7/8)	17.46 (11/16)
FL-CV3-8	10.0 (0.39)	1.70	1/2" Lok		86.9 (3.42)	41.5 (1.63)	22.22 (7/8)	22.22 (7/8)
FL-CV5-12	16.0 (0.62)	5.20	3/4" Lok		109.7 (4.32)	61.0 (2.40)	31.75 (1-1/4)	28.57 (1-1/8)
FL-CV6-16	18.0 (0.70)	8.00	1" Lok		120.4 (4.74)	58.3 (2.30)	34.92 (1-3/8)	38.1 (1-1/2)



# Lok Type Ball Valve - HBV10

Closedown ball valve with ferrules

**HiFLUX**



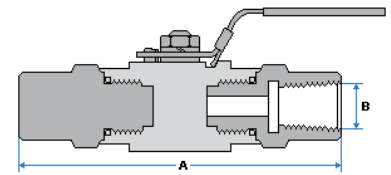
(단위:mm)

Catalog No.	Pressure Rating (psi)	Tube Size	Hole Diameter	Dimensions	
				A	
FL-HBV10-4	3,000	1/4"	5	90	
FL-HBV10-6	3,000	3/8"	7	90	
FL-HBV10-8	1,500	1/2"	9	95	

# Lok Type Ball Valve - HBV10-NF

Lok Type Ball Valve Female close down

**HiFLUX**



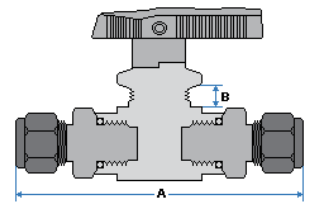
(단위:mm)

Catalog No.	Pressure Rating (psi)	Hole Diameter	Dimensions	
			A	B
FL-HBV10-NF-4	3,000	5	73	1/4" NPT
FL-HBV10-NF-6	3,000	7	88	3/8" NPT
FL-HBV10-NF-8	1,500	9	102	1/2" NPT

# Lok Type Ball Valve - HBV1

Straight type valve with ferrules

**HiFLUX**



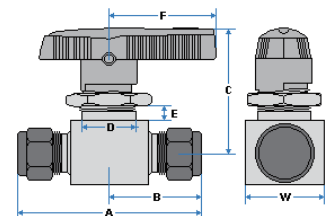
(단위:mm)

Catalog No.	Pressure Rating (psi)	Tube Size	Hole Diameter	Dimensions	
				A	B
FL-HBV1-2	6,000	1/8"	2.4	72	6.4
FL-HBV1-4	6,000	1/4"	4.2	84	6.4
FL-HBV1-6	5,000	3/8"	6.4	96	6.4
FL-HBV1-8	3,000	1/2"	10.3	104	9.7

# Lok Type Hex Ball Valve - BV1

2way valve with ferrule

**HiFLUX**



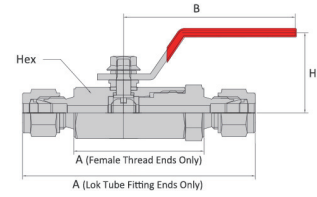
(단위:mm)

Catalog No.	Tube Size	Hole Diameter	Cv	Dimensions						
				A	B	C	D(Ø)	E	F	W
FL-BV1-2	1/8"	2.4	0.15	51	25.5	34.5	14.2	6.4	28.6	14.7
FL-BV1-4	1/4"	4.8	0.9	53.8	26.9	37.3	14	6.4	28.6	15
FL-BV1-6	3/8"	7.1	2.0	70.8	35.4	50	27	10.7	51	28.5
FL-BV1-8	1/2"	10.3	4.6	85	42.5	62	36.5	9	60	38.1

# Lok Type Hex Ball Valve - BV3

Butterfly & nylon

## HIFLUX



(단위:mm)

Catalog No.	Orifice mm (in)	Cv	End Connections Inlet / Outlet	Dimensions			
				A	H	B	Hex
FL-BV3-4T	5.0 (0.19)	1.25	1/4" Lok	79.4 (3.12)	27.3 (1.07)	58.6 (2.30)	17.46 (11/16)
FL-BV3-4N		1.35	1/4" Female NPT	40 (1.57)			
FL-BV3-4R		1.35	1/4" Female PT	40 (1.57)			
FL-BV3-6T	7.5 (0.30)	2.5	3/8" Lok	89.6 (3.52)	34.6 (1.36)	78.2 (3.07)	22.22 (7/8)
FL-BV3-6N		2.6	3/8" Female NPT	45 (1.77)			
FL-BV3-6R		2.6	3/8" Female PT	45 (1.77)			
FL-BV3-8T	9.0 (0.35)	9.25	1/2" Lok	101 (3.97)	37 (1.45)	78.2 (3.07)	26.98 (1-1/16)
FL-BV3-8N			1/2" Female NPT	54.5 (2.15)			
FL-BV3-8R			1/2" Female PT	54.5 (2.15)			
FL-BV3-12T	12.5 (0.49)	12.65	3/4" Lok	107.5 (4.23)	44 (1.73)	99 (3.89)	31.75 (1-1/4)
FL-BV3-12N			3/4" Female NPT	61 (2.40)			
FL-BV3-12R			3/4" Female PT	61 (2.40)			
FL-BV3-16T	16.0 (0.63)	17.35	1" Lok	132.8 (5.22)	47.2 (1.85)	99 (3.89)	38.1 (1-1/2)
FL-BV3-16N			1" Female NPT	75 (2.95)			
FL-BV3-16R			1" Female PT	75 (2.95)			



**(주) 하이플럭스**

[Home\\_hiflux.com](http://Home_hiflux.com) / [Shop\\_www.hifluxmall.com](http://Shop_www.hifluxmall.com)

(34037) 대전광역시 유성구 갑천로 361-23 (탑립동 933-7) TEL. 042-933-5670 FAX. 0303-0799-1241  
361-23, Capcheon-ro, Yuseong-gu, Daejeon, 34037, Republic of Korea TEL. +82-42-933-5670 FAX. +82-0303-0799-1241